

# SCENTSTREAM SXD5020 SCENT DELIVERY SYSTEM

## Installation and Operation Instructions



## **SCENTSTREAM SXD-5020 PARTS LIST**

### **Control Unit**

- Hardware Set
  - (6) 5/16" x 1" Self-tapping sheet metal screws
  - (6) # 8 Plastic drywall anchors with 1 1/4" wood screw
  - (6) 3/16" x 1-1/4" Tapcon concrete screws
  - (2) 1/4" Retaining Clips

### **Nozzle Assembly**

- Collector w/1-liter plastic bottle
- Scent Delivery Hose Assembly
- Collector Mounting Plate Assembly w/ 76/127mm straps (only used w/ 1-liter bottle)
- Hardware Set
  - (1) 1/2" Hose Clamp
  - (3) 1/2" Metal Hose Strap
  - (5) 1/4" Retaining Clips
  - (7) # 8 plastic wall anchors with 1 1/4" wood screw
  - (7) 3/16" x 1-1/4" Tapcon concrete screws
  - (11) 5/16" x 1" Self-tapping sheet metal screws
  - (2) 14" plastic wire ties

### **Optional 5-Liter Shelf Mount** (replaces Collector Mounting Plate Assembly)

- Shelf Mount with one (1) Safety Strap

## **REQUIRED TOOLS**

- Pencil
- Tape Measure
- Small Level
- Medium Screwdriver/Bit
- #2 Phillips Screwdriver/Bit
- 1/4" Nut Driver/Bit
- 5/16" Nut Driver/Bit
- Utility Knife
- Plastic tubing cutters
- 5/32" Masonry Drill Bit
- 1/2" Drill Bit
- 1-1/4" Hole Saw
- Drill Roto/Hammer
- Flash Light

## **SCENTSTREAM SXD-5020 INSTALLATION INSTRUCTIONS**

The ScentStream SXD-5020 Scent Diffusion System is designed to deliver a dry vapor fragrance directly into the air flow of existing ventilation systems. The control system creates and controls the air pressure used to atomize the fragrance into a dry vapor. The atomization occurs in a nozzle collector assembly, which is installed near the air duct where scent is to be delivered.

Always review the air flow characteristics of a property before starting an installation. Most properties have well designed air flow to ensure proper heating and cooling of the property. If the airflow is such that the property is properly heated and cooled, it will then have no problem evenly distributing scent to the same area. The property will assist in identifying which air handlers service the area to be scented. It is important to understand the air handlers and air duct system of the facility in order to be sure the scent will be delivered to the appropriate areas. This understanding will avoid putting scent in areas where it is not wanted. The ScentStream SXD-5020 Scent Diffusion System is most often installed at or near the air handler.

### **Control Unit Mounting Procedures – ScentStream SXD-5020**

1. Determine mounting location - Carefully consider all criteria when selecting location for the system.
  - a. The control unit should be mounted within 6 ft of a 110VAC outlet.
  - b. The control unit should be within 50 feet of the nozzle assembly to ensure proper air pressure on the nozzle. For ease of installation and service, it is recommended that this distance be as short as possible.
  - c. Mount the control unit in a clean dry space. Usually 3 – 6 feet off floor for easy access.
  - d. Avoid locations that will collect dust. Try to keep the control unit off the floor to avoid picking up excess dust and dirt.
2. Secure control unit, find a solid secure surface for mounting. Always attach to studs when mounting on studded walls.
  - a. Metal – Use self tapping screw 5/16" x 1" long
  - b. Drywall – Drill 1/2" hole and use 3/16" x 4" butterfly screws or 1-1/4" screw to attach to a wood stud
  - c. Masonry – Drill 5/32 hole using masonry bit and secure using 3/16" x 1-1/4" concrete anchor
3. Air supply hose - Use 1/4" OD x 1/8" ID. Maximum of 50 feet in length.
  - a. If needed use 1/4" inch retaining clips to secure hose to wall attaching with appropriate hardware. This will help prevent damage to the tubing.
  - b. Attach the 1/4" inch OD air supply hose between the nozzle assembly and the control unit
4. Cord Mounting - Dress and secure power cord using appropriate hardware.

## **Nozzle and Collector Assembly Installation Procedure**

1. Determine the location on the air handler or air supply duct where the nozzle and hose plate will be mounted.
  - a. Determine which supply duct the scent will be injected into
  - b. Downstream of fire protection devices
  - c. Keep clear of louvered vents.
  - d. Center the nozzle for equal distribution of scent within the duct
2. Mount the scent delivery hose assembly with cover plate onto air handler
  - a. Drill a 1-1/8" hole in duct
  - b. Use a screwdriver to punch through the insulation inside of the duct.
  - c. Insert the hose assembly pointing in the direction of airflow. Be sure the hose assembly is through the insulation and in the main air stream of the duct.
  - d. Attach hose assembly using two 5/16" x 1" self tapping sheet metal screws
  - e. Make sure the seal is on the back of the cover plate to prevent air leaks
3. Mount the nozzle collector assembly and scent oil container - Determine if 1 liter bottle or 5 liter can will be used
  - a. If one liter bottle is used the nozzle collector assembly will be mounted using a wall mount bracket.
    - Determine the location where mounting plate will attach
    - Not to exceed 10 feet from where scent is injected into the supply duct.

(NOTE: The nozzle assembly must be mounted below the entry point into the duct. This allows for any residual oil that collects on the wall of the scent delivery hose to drain back into the nozzle collector assembly.)

      - a. No dips or traps in scent delivery hose
      - b. Scent delivery hose must be vertical or horizontal with pitch to allow for residual oil to drain back into nozzle collector assembly
      - c. No kinks or sharp bends in the scent delivery hose
    - Attach collector assembly to wall plate with two 4" hose clamps
    - Attach the wall plate to the wall or air handler using four screws
    - Cut the white inner hose to length and attach to collector.

Secure hose with ½ inch hose clamp
    - Dress the hose assembly using clamps and appropriate hardware
    - Install the oil bottle - make sure seal is in place on collector
    - Tighten the bottle to make a good air-tight seal.
  - b. If 5 liter bottle is used the nozzle assembly will be mounted with wall mount shelf.
    - Determine the location where shelf will be mounted
    - Not to exceed 10 feet from where scent is injected into the supply duct. (NOTE: The nozzle collector assembly must be mounted below the entry point into the duct. This allows for any residual oil that collects on the wall of the scent delivery hose to drain back into the nozzle collector assembly.)
      - a. No dips in scent delivery hose
      - b. Scent delivery hose must be vertical or horizontal with pitch to allow for residual oil to drain back into nozzle collector assembly
      - c. No kinks or sharp bends in scent delivery hose

- Attach the shelf to the wall or air handler using appropriate hardware.
- Attach nozzle to top of can, make sure seal is in place on collector
- Tighten collector to can making sure there is a good air-tight seal.
- Push the pour spout on the can down into the recessed position. This will allow the siphon tube to reach the bottom of the can
- Cut the white inner hose to length and attach to collector. Secure with 1/2 inch hose clamp
- Dress the hose assembly using clamps and appropriate hardware
- Secure the oil can to shelf using a safety strap

## **SCENTSTREAM SXD-5020 OPERATING INSTRUCTIONS**

1. Power Switch – Controls main power to pump and cycle timer
  - a. Flip the switch up to the on position to turn on the main power.
2. Nozzle Pressure – Allows for the adjustment of air pressure to the nozzle by opening or closing a pressure relief valve.
  - a. Adjust air pressure on the nozzle to increase or decrease the amount of scent being diffused. Be sure to set the lock nut after adjusting the pressure to ensure the valve does not move over time from vibration.
  - b. Recommended nozzle pressure is between 7 and 9 psi.
  - c. Use the cycle timer to adjust the amount of scent that is dispersed into the air.
3. Cycle Timer - The ON CYCLE and OFF CYCLE knobs adjust how long the pump operates and will determine the intensity of the scent released. The minimum cycle time for both cycles is 2 minutes. The maximum cycle time is 10 minutes. The knobs should be used in conjunction with one another to adjust scent output to optimum levels. Maximum scent output would be achieved with an ON cycle of 10 minutes and an OFF cycle of 2 minutes. Conversely, minimum scent output would be achieved with an ON cycle of 2 minutes and an OFF cycle of 10 minutes.
  - a. ON CYCLE - Adjust on cycle knob clockwise to increase ON time, counterclockwise to decrease the ON time
  - b. OFF CYCLE - Adjust OFF CLCLE knob clockwise to increase OFF time, counterclockwise to decrease the OFF time
4. Fuse
  - a. If unit is not functioning power switch is not illuminated when in the on position check fuse. If fuse is bad replace with AGC-5 fuse.
5. 24 hour Timer - The 24-hour timer should be programmed to turn on the system at pre-determined days and times.

## **Setting the current day and time**

1. Press and hold the button labeled "Clock".
2. Press and release "Day" until the correct day is displayed at top of display.
3. Press and release "Hour" until the correct hour is displayed. (NOTE: AM and PM).
4. Press and release "Minute" until the correct minutes are displayed.

## **Setting event operating days and times**

1. Use the button labeled "Manual" to set the mode to "Auto" (the selector is displayed directly below the time in the display).
2. Press and release the "Timer" button to program the "1- On" event. This will be the day and time that the unit will power on.
3. To set the day, or combination of days that you would like the "1-On" event to occur, press and release the "Day" button until the desired power-on day(s) are displayed along the top edge of the display.
4. To set the time (hour and minutes) that you would like the "1-On" event to occur, press and release the "Hour" and "Minute" buttons until the desired power-on time is displayed. (NOTE: AM and PM).
5. Press and release the "Timer" button again to program the "1-Off" event. This will be the day and time that the unit will power down.
6. To set the day, or combination of days that you would like the "1-Off" event to occur, press and release the "Day" button until the desired power-off day(s) are displayed along the top edge of the display.
7. To set the time (hour and minutes) that you would like the "1-Off" event to occur, press and release the "Hour" and "Minute" buttons until the desired power-off time is displayed. (NOTE: AM and PM).
8. There are a total of 8 events. Use "Timer" button to proceed to the next event. (NOTE: Press the "Clock" button at any time to exit the event programming sequence).

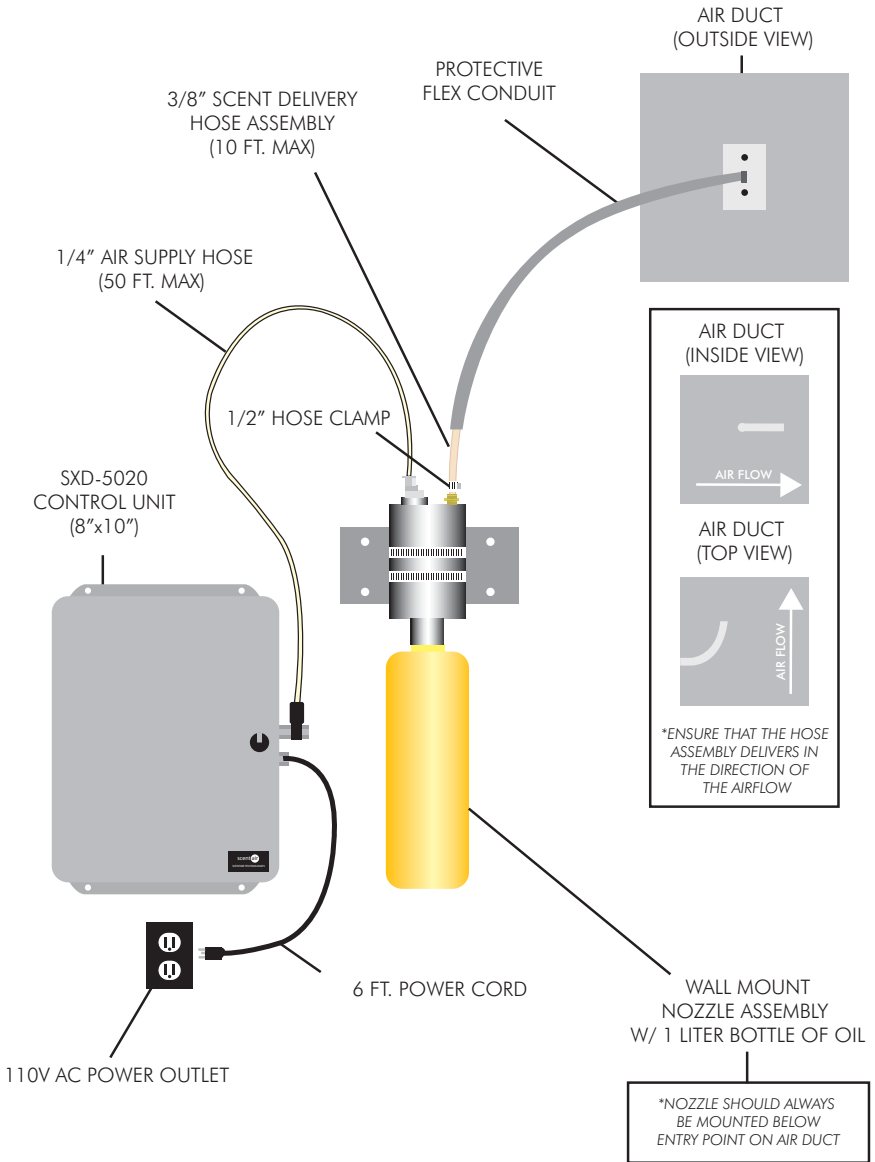
## **Replacing the Fragrance Oil**

When the fragrance oil is depleted it is replenished by removing the empty container and installing a new container. The oil is available in various container sizes depending on the application.

1. Turn the POWER switch on the control panel off. The oil container is pressurized when the air pump is running. Turning the unit off while replacing the oil container will minimize residual oil spillage during the process.
2. Clean the top of the oil container and nozzle assembly to prevent dust, dirt or debris from entering the oil container. Contaminants in the oil have the potential to clog the diffuser nozzle and adversely affect the operation of the system.
3. Turn the container to the left to unscrew it from the nozzle assembly.
4. Carefully remove the container from the nozzle assembly taking care not to damage the siphon tube that reaches to the bottom of the oil container.
5. Remove the cap on the new oil container and position the new container of oil so that the siphon tube on the nozzle assembly reaches the bottom of the container. Secure the container by turning the container to the right being sure not to cross thread the fitting. Hand tighten being careful not to over tighten. NOTE: Always replace oil container by turning the container. Do not attempt to turn the nozzle assembly as it is attached to the hose assemblies.
6. Turn on the POWER at the control panel can check for oil and air leaks at the nozzle.

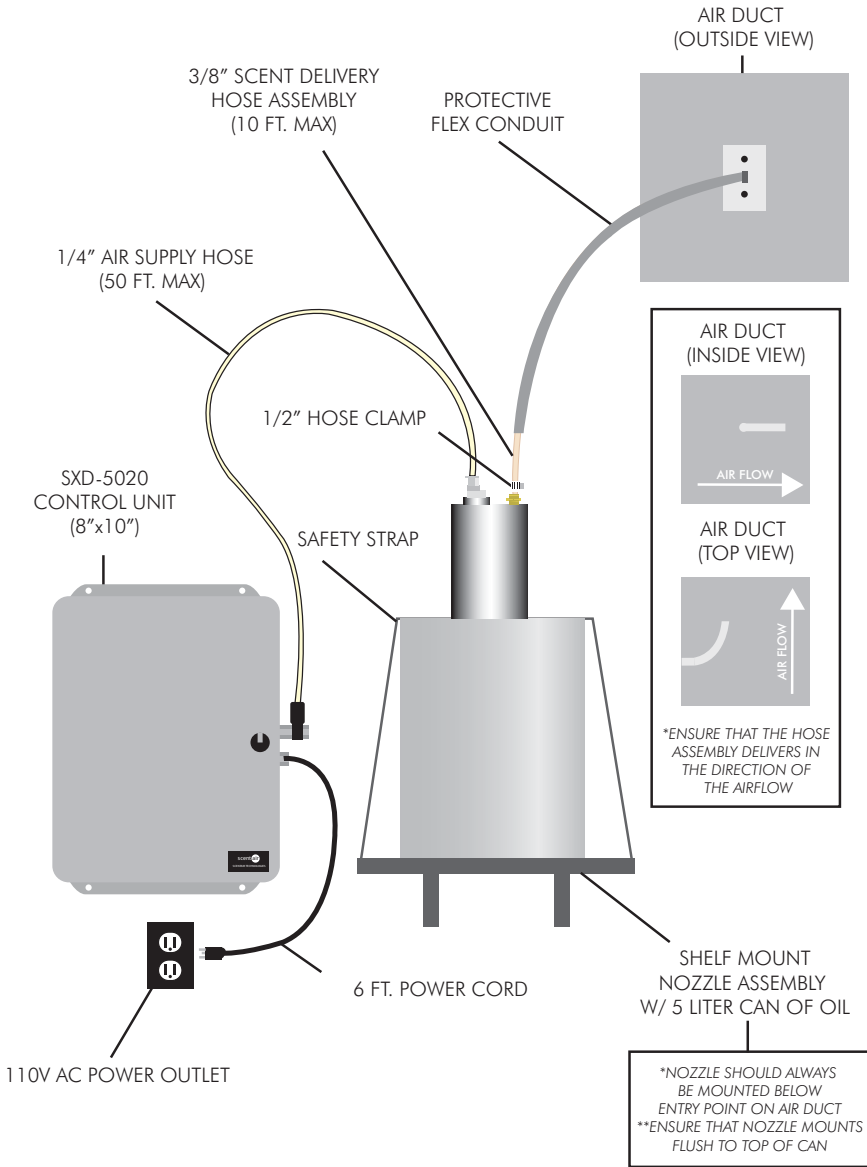
# SXD-5020 HVAC SCENT DELIVERY SYSTEM

## INSTALLATION INSTRUCTIONS W/ 1 LITER BOTTLE



# SXD-5020 HVAC SCENT DELIVERY SYSTEM

## INSTALLATION INSTRUCTIONS W/ 5 LITER CAN



# Troubleshooting – ScentStream SXD-5020 Scent Diffusion System

## PROBLEM

## SOLUTION

Unit will not turn on

- Make sure the unit is plugged into a working outlet.
- Turn unit switch to on. Red light should be illuminated.
- Check fuse to replace if necessary.
- Switch clock to "ON" position. If unit turns on, reset clock event settings and switch back to "AUTO".
- If unit still doesn't run, contact DMX for replacement.

No pump pressure

- Confirm that pump cycle is "ON".
- Make sure the black pressure tube connections are seated and not damaged.
- Reseat or replace if necessary.
- Turn pressure valve clockwise to increase pressure.
- If 7psi can not be obtained, contact DMX for replacement.

Cannot smell scent

- Make sure pump is running and the pressure gauge is set to 7-10psi.
- Check that the event timers on the clock are set for the unit to run at the current times of the day.
- Check for oil in the container.
- Loosen the oil container off the collector and look for mist. If no mist is seen, the bottom half of the nozzle or the pickup tube is clogged. A small paperclip or strip of wire can be used to clear obstruction. If that does not work, replacement will be necessary.
- Make sure 1/2" tubing on the discharge side of collector is mounted in the correct supply duct and is clear without any dips or traps.
- Adjust "ON/OFF" timers for longer run cycles.
- Make sure all dampers are open in the HVAC duct and the HVAC system fan is on.

For further assistance, please contact DMX Customer Service:  
800.345.5000 support@dmx.com

**800.345.5000 \* dmX.com**  
In Canada call 800.350.0369

